

leading regeneration

Geistlich



Smart partners for your regenerative treatments

Oral surgery instruments by
META Technologies S.r.l.



SAFESCRAPER TWIST CURVE VOLUMIZER

Extra volume version

Experience the trusted features of the **Safescraper Twist**, with a **20% increase** in collected bone volume.

Autologous bone is a precious asset in alveolar ridge augmentation. Collecting enough can be a challenge, especially for large augmentation procedures. Sometimes, even resorting to extraoral surgery sites is necessary, which can cause additional discomfort for the patient.



- > Developed from the longstanding experience of the Safescraper family
- > Enables rapid and accurate collection of autologous cortical bone

Redesigned blade

- > Double grooves in the blade allow for three collecting surfaces
- > Cutting performance reduces patient discomfort
- > Blade has a cutting range of 160° (just like the whole Safescraper family)
- > Works on plane, concave and convex surfaces

Established benefits

The Volumizer continues to provide the established benefits of the Safescraper Twist Curve:

- > Based on state-of-the-art technology and current medical practices
- > Ergonomic curved body easier for surgeons to use
- > Devices are disposable and come ready to use in single sterile packages
- > Quality of harvested bone means presence of many viable osteocytes
- > Promotes graft acceptance, neovascularisation and bone regeneration



Collected bone already contains blood and is ready to use

Product Code	Product	Description
MET-5535	Safescraper Twist Curve Volumizer	3 disposable units, chamber capacity: 2.5 cc

MICROSS

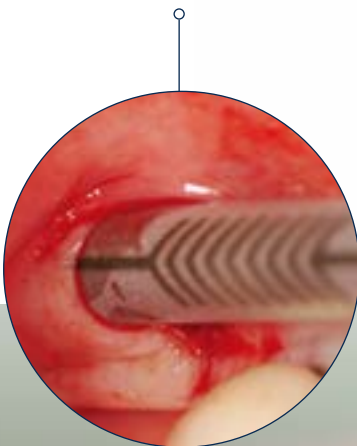
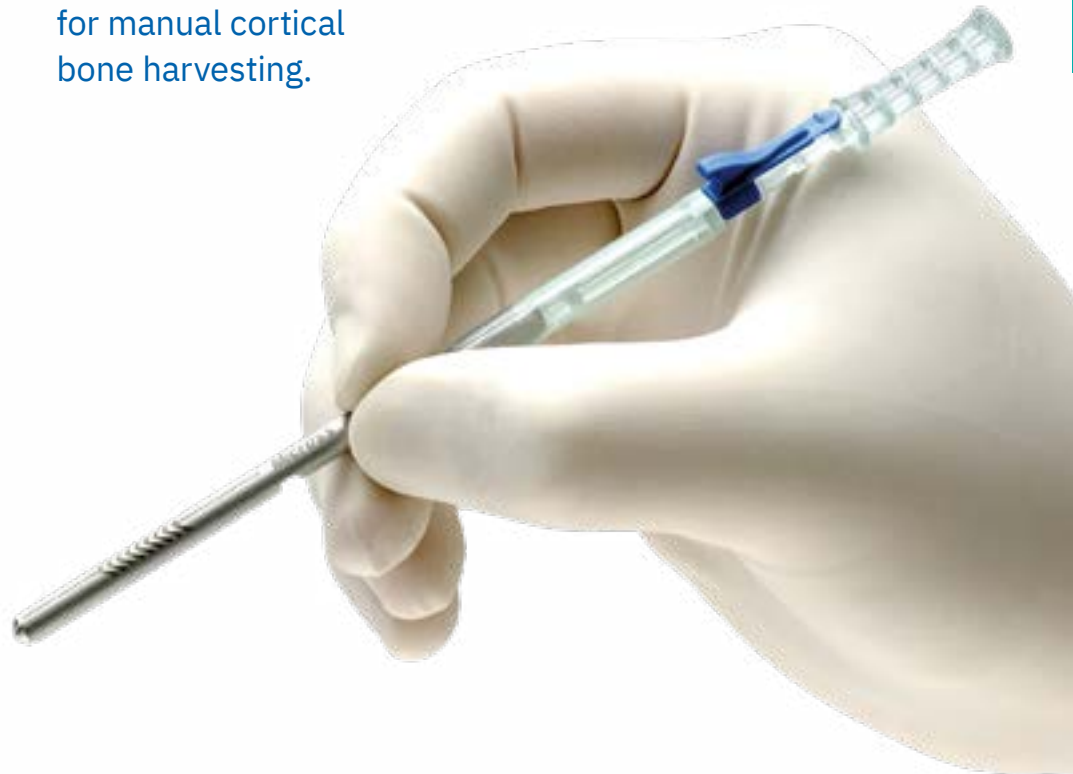
Making bone harvesting a handy procedure

With its special shape and just 5 mm in diameter, it is designed for a minimally invasive approach and is easy to use even in narrow areas.

Micross is a minimally invasive single-use device for manual cortical bone harvesting.

Minimally invasive harvesting technique

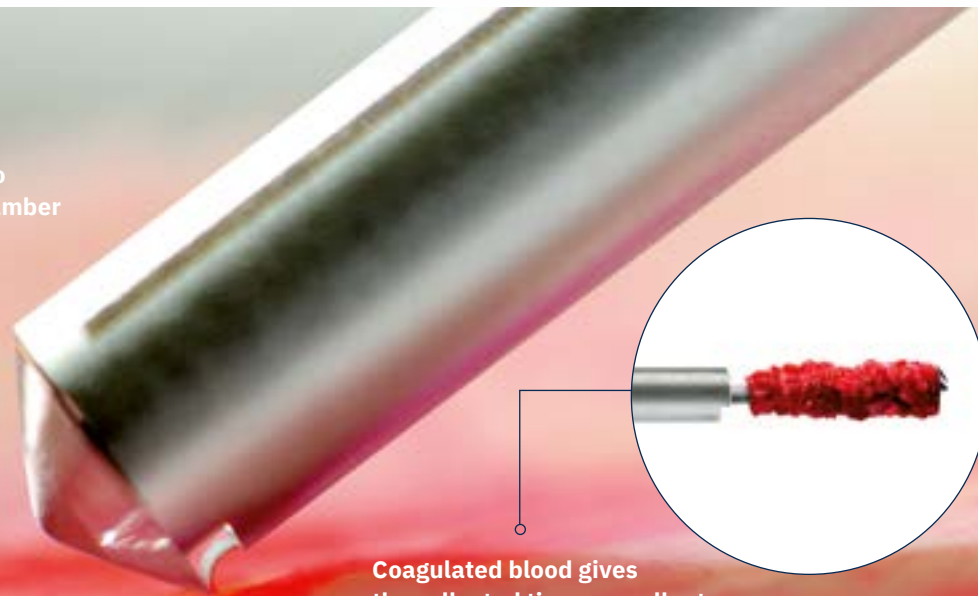
Micross is a bone harvesting device specifically designed for surgical techniques that minimise post-operative discomfort.



Unlock to open chamber



The exclusive microblade facilitates an excellent cutting performance, making the collection of autologous bone shavings easy. Collect only the bone that is strictly necessary for the defect and minimise invasiveness for your patients.



Coagulated blood gives the collected tissue excellent biological plasticity.

Product Code	Product	Description
MET-5540	Micross	1 disposable unit, chamber capacity: 0.25 cc

MICROSS CURVE

NEW

represents the next evolution in the Micross family, making minimally invasive bone harvesting even easier, even in the most hard to reach areas

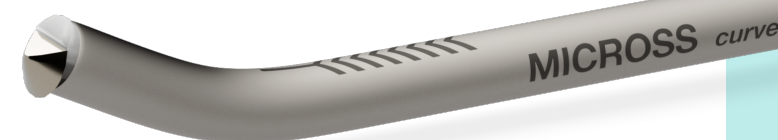
New 27° curvature

The Micross Curve ergonomical design allows the user to easily reach retromandibular, palatal and other challenging areas.

...same easy retrieval

You can enjoy the design advantages of the Micross Curve without worrying about how to retrieve the bone shavings. The chamber opens the same way as for the Micross, simply by opening the blue lock and pushing the chamber forwards.

Closed Device

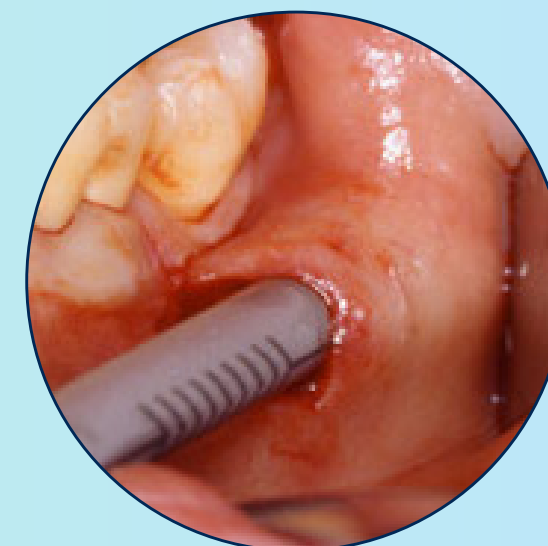


Opened Device



Minimise discomfort with extra access

The Micross Curve builds on the principle of the Micross. Just like the Micross, it was developed for minimally invasive techniques. Thanks to the curved design, it is even easier to use in hard-to-reach areas. Collect only the bone that is absolutely needed and reduce invasiveness – your patients will love it.



Product Code	Description
MET-5542	Micross Curve 1 disposable unit, chamber capacity: 0.25 cc



Geistlich takes pride in the quality and safety of our products. Strict manufacturing processes and rigorous testing ensure that all Geistlich products exceed expectations and meet established regulatory requirements.

Excellent synergy: joint usage of META instruments and Geistlich biomaterials



Geistlich Bio-Oss®

Stable scaffold for new bone.^{2,3,4,5} The slow resorption of Geistlich Bio-Oss® increases the stability of the augmentation material⁶ – the best prerequisite for long-term implant survival rates.⁷

Geistlich Bio-Gide®

Stabilises the grafted area, protecting bone particles from dislocation.⁸ The natural collagen structure allows homogeneous vascularisation and permits prompt and optimal tissue integration and wound stabilisation.⁹ The combination of flexibility, good adhesion, and tear resistance contribute to easy handling, in turn saving time, and simplifying the surgical procedure.¹⁰



Manufacturer

META Technologies S.r.l.
Via E. Villa 7
42124 Reggio Emilia
Italy
Phone +39 0522 502311
info@metahosp.com
www.metahosp.com

Distributed by

Australia and New Zealand
Geistlich Pharma Australia Pty Ltd.
The Zenith – Tower A
Level 21, Suite 21.01
821 Pacific Highway
NSW 2067 Chatswood,
Australia
Phone AU +61 1800 776 326
Phone NZ +64 0800 500 043
info@geistlich.com.au
info@geistlich.co.nz
www.geistlich.com/en-au



@geistlichanz

- 1 Zaffe D, D'Avenia F: Clin Oral Implants Res 2007; 18 (4): 525–33. (Clinical study)
- 2 Orsini G et al.: J Biomed Mater Res B Appl Biomater 2005; 74 (1): 448–57. (Clinical study)
- 3 Piattelli M et al.: Int J Oral Maxillofac Implants 1999; 14 (6): 835–40. (Clinical study)
- 4 Sartori S et al.: Clin Implants Res 2003; 14 (3): 369–72. (Clinical study)
- 5 Traini T et al.: J Periodontol 2007; 78 (5): 955–961. (Clinical study)
- 6 Orsini G et al.: Oral Dis 2007; 13 (6): 586–93. (Clinical study)
- 7 Jung RE et al.: Clin Oral Implants Res 2013; 24 (10): 1065–73. (Clinical study)
- 8 Perelman-Karmon M et al.: Int J Periodontics Restorative Dent 2012; 32 (4): 459–65. (Clinical study)
- 9 Rothamel D et al.: Clin Oral Implants Res 2005; 16 (3): 369–78. (Pre-clinical study)
- 10 Data on File. Geistlich Pharma AG, Wolhusen, Switzerland.