

leading regeneration

Geistlich



Geistlich Bio-Gide®

Excellence in Every Aspect

 swiss made

Geistlich Bio-Gide®

When reliable and proven outcomes are essential, choose Geistlich Bio-Gide®. The original bilayer collagen membrane of porcine origin is designed to support the stability of bone grafts, limit the ingrowth of fibroblasts, and promote soft tissue healing. It is a well-established solution for regenerative procedures. Used across a wide range of dental surgeries, from straightforward to complex cases, Geistlich Bio-Gide® offers consistent performance and has demonstrated long-term clinical success in both bone and soft tissue regeneration.^{1,2}



Why your patients will love the results

- **Reliable implant stability:** An implant's success begins with its foundation. The combined use of Geistlich Bio-Gide® and Geistlich Bio-Oss® enhances stability and supports long-term survival, where excellence is built from the ground up.³
- **Esthetics that last:** Multiple studies confirm that Geistlich Bio-Gide® and Geistlich Bio-Oss® deliver outstanding esthetic outcomes and maintain peri-implant health, even more than 10 years after the procedure.^{1,4}



Perform with user friendly and time saving products

- **Tailored to perfection:** Geistlich Bio-Gide® is available in multiple sizes and can be easily trimmed to match the specific anatomical needs of each patient, ensuring a precise and customized fit.⁵⁻⁷
- **Ready when You are:** Geistlich Bio-Gide® comes sterile and ready to use straight from the package. It requires no pre-wetting or additional preparation, saving time and simplifying your workflow.⁸
- **Seamless adaptation to bone morphology:** Thanks to its unique structure, Geistlich Bio-Gide® adapts seamlessly to the bone graft and surrounding bone.⁷



Exceptional results you can rely on

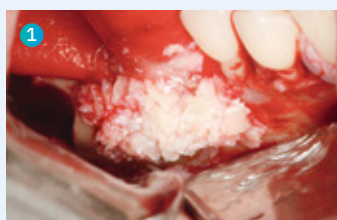
- **Higher implant survival:** Using Geistlich Bio-Gide® technology results in higher implant survival rates compared to sites without a membrane. This significantly reduces the risk of implant failure, enables more predictable outcomes, and strengthens your professional reputation.³
- **Clinically proven long-term effectiveness:** Clinically proven for over 20 years, Geistlich Bio-Oss® and Geistlich Bio-Gide® deliver outcomes comparable to autologous bone in terms of peri-implant health, esthetics, marginal bone loss, and implant survival. Trusted by clinicians worldwide, Geistlich Bio-Gide® supports long-term implant success and contributes to high patient satisfaction.^{1,4}



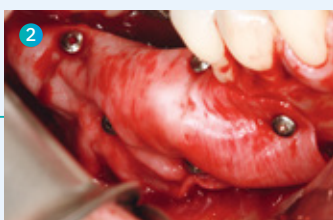
Prof. Istvan Urban
Budapest, Hungary

Unmatched Original

The Sausage Technique™ by Dr. Istvan Urban highlights the advanced handling of Geistlich Bio-Gide®, enabling secure pinning, stretching, and dense packing with bone graft material. Combined with Geistlich Bio-Oss® and autogenous bone, it supports up to 5 mm of new horizontal bone and faster maturation, even in large defects. Easy handling and long-term volume stability give clinicians confidence in achieving predictable regeneration and successful implant outcomes.^{9,10}



1
Buccal view after application of a 1:1 mixture of autogenous particulated bone and Geistlich Bio-Oss® granules. The Geistlich Bio-Gide® membrane is secured on the crest before the application of the graft.



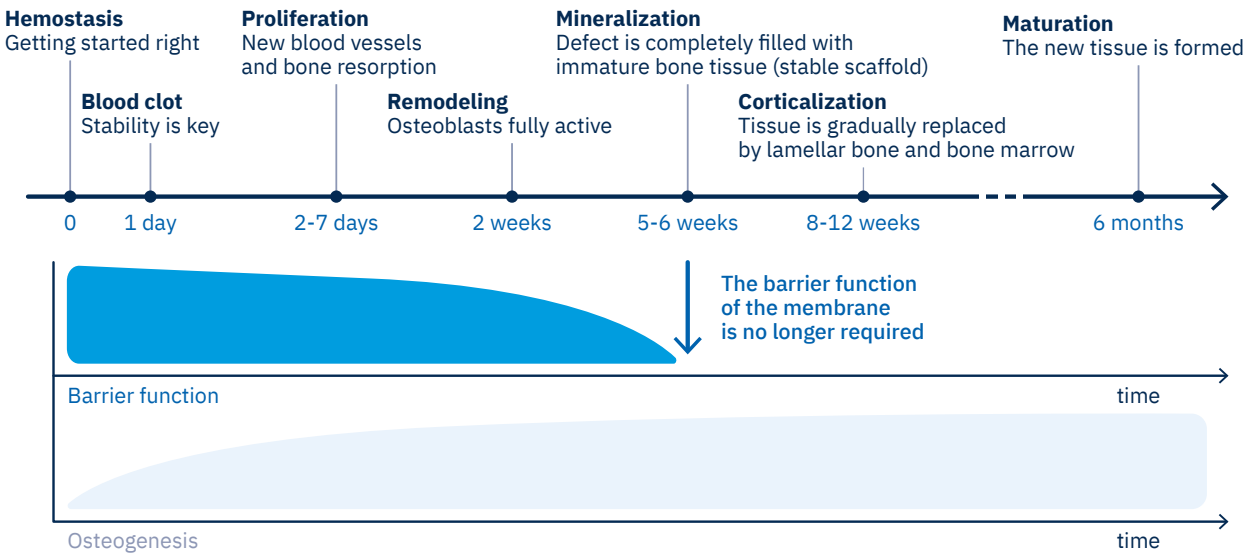
2
Buccal view of a single Geistlich Bio-Gide® membrane, which is fixed with titanium pins. The fixed membrane immobilizes the bone graft creating the sausage skin effect.



3
Occlusal view of the regenerated ridge at re-entry after 7 months. Two implants were placed with good primary stability. Note the excellent incorporation of the Geistlich Bio-Oss® with the autograft.

Ideal barrier time

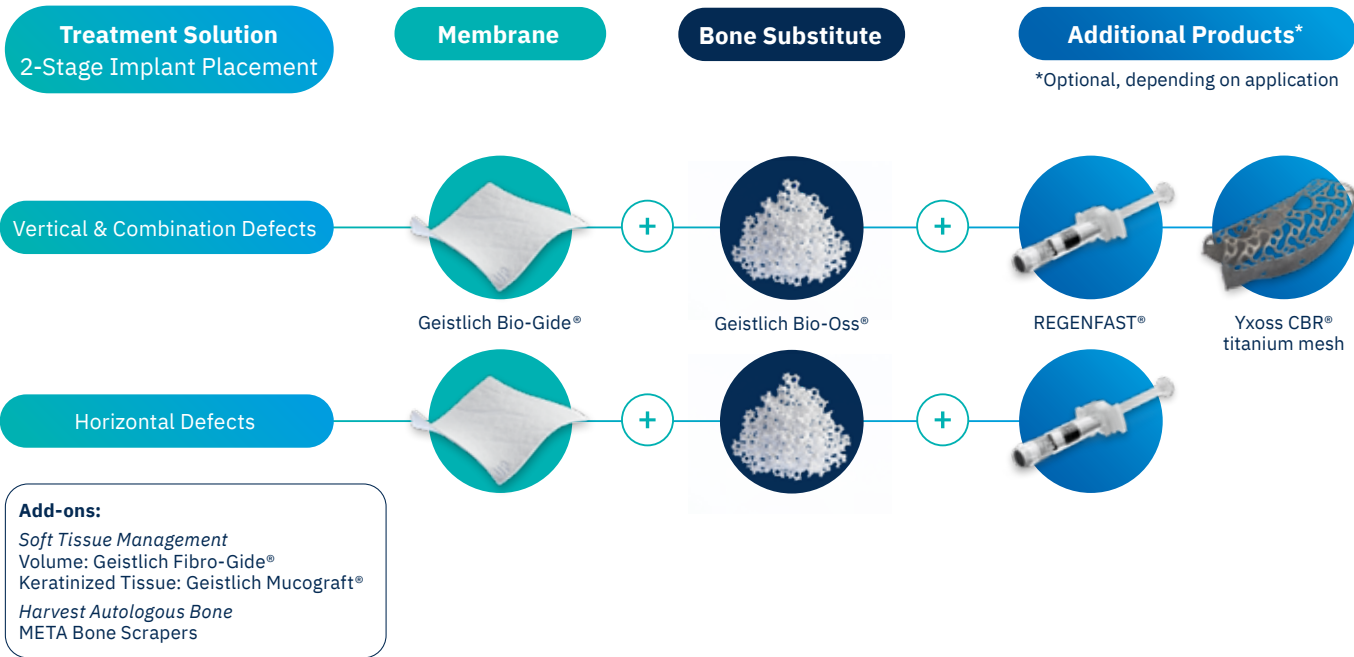
The Guided Bone Regeneration (GBR) 2.0 concept depends on early vascularization to deliver essential nutrients and growth factors to the grafted site. Geistlich Bio-Gide® supports this process by maintaining its barrier function for the required duration and then resorbing naturally once the periosteum has healed. This controlled behavior contributes to smooth and predictable healing for patients.^{10,11}



Barrier function duration aligned with bone healing phases.¹²

Staged GBR for vertical and horizontal bone loss

In challenging sites with bone or soft tissue deficiencies, a two-stage approach allows for regeneration before implant placement. Geistlich Bio-Oss® and Bio-Gide® support predictable GBR, creating stable conditions for long-term success.^{4,11}



Dr. Célia Coutinho Alves
Porto, Portugal

Comfortable healing with less invasiveness

Using Geistlich Bio-Gide® with the open-healing technique reduces the need for flap mobilization, resulting in less postoperative pain and discomfort for the patient.^{13,14}



Geistlich Bio-Gide® is folded over the filled socket, adapted under the palatal sulcus, fixed with vertical mattress sutures and heals by secondary intention (open healing).



Situation after site-conditioning of the soft tissue 4 months post-extraction.

Ready for the next step?

1 Learn

Learn more about Geistlich Bio-Gide®



2 Try

Learn how you can try our products



3 Buy

Buy our products here



Scan for references



More details about our global distribution partners:
www.geistlich.com

Manufacturer

Geistlich Pharma AG
Bahnhofstrasse 40
6110 Wolhusen
Switzerland
Phone +41 41 492 55 55
info@geistlich.com
www.geistlich.com

Affiliate Australia and New Zealand

Geistlich Pharma Australia Pty Ltd.
The Zenith – Tower A
Level 21, Suite 21.01
821 Pacific Highway
NSW 2067 Chatswood,
Australia
Phone +61 1800 776 326
info@geistlich.com.au
www.geistlich.com.au

Affiliate Great Britain and Ireland

Geistlich Sons Limited
1st Floor, Thorley House
Bailey Lane
Manchester Airport
Manchester M90 4AB
Great Britain
Phone +44 161 490 2038
info@geistlich.co.uk
www.geistlich.co.uk

Affiliate North America

Geistlich Pharma North America Inc.
400 Alexander Park Drive
Suite 302 Princeton
NJ 08540 USA
Phone +1 855 799 5500
info@geistlich-na.com
www.geistlich-na.com

Distribution Canada

HANSamed Ltd.
2830 Argenta Road
Units 5–9
L5N 8G4 Mississauga
Canada
Phone +1 800 363 2876
orders@hansamed.net
www.hansamed.net

Geistlich – committed to regenerative dentistry

Geistlich is the global leader in dental regeneration, backed by more than 170 years of expertise in processing and refining bone and tissue. We are dedicated to developing evidence-based products that promote the regeneration of bone, cartilage, and soft tissue — ensuring better healing, long-term stability, and improved quality of life for patients.

Advancing science and patient care

With thousands of scientific studies and the highest Swiss quality standards, we have been shaping the field of regenerative medicine for decades. Through our global educational programs, reaching over 100,000 professionals each year, and our close

partnerships with leading scientists, clinicians, and over 100 universities worldwide, we ensure that patients benefit from the latest scientific knowledge and advanced treatment methods.

Rooted in tradition, driven by innovation

As a fifth-generation family-owned company, Geistlich stands for reliability, trust, and innovation. We develop our products carefully with dentists, surgeons, and patients in mind — constantly expanding our portfolio through in-house innovations and strategic partnerships. From the heart of Switzerland to the world, we deliver long-term solutions that enable the best possible patient care.

Grow with Geistlich



Education programs

Comprehensive, tailored training courses for all dental professionals, including Geistlich myGuide®, a self-paced learning experience.



Checklists and templates

Geistlich offers tools to simplify oral surgery and ensure consistent outcomes.



Patient education

Geistlich provides materials to help educate patients and boost case acceptance rates.



Scientific opportunities

Geistlich supports the scientific community by offering opportunities like research grants and Young KOL programs to advance bone and soft tissue regeneration.

Geistlich Bio-Gide® is available in three convenient sizes*:

- 13 x 25 mm
- 25 x 25 mm
- 30 x 40 mm

and a combination package*:

- Geistlich Combi-Kit Collagen (Geistlich Bio-Gide® 16 x 22 mm with Geistlich Bio-Oss® Collagen 100 mg)

*Product availability may vary depending on your location.

